

Mosaic Insurance Alliance is the premier provider of risk management, loss prevention, and regulatory compliance insurance options for businesses working in the cannabis industry. Our extensive experience gained through working with hundreds of cannabis entrepreneurs like yourself make us uniquely qualified to help you navigate the choices necessary to survive in this quickly evolving marketplace.

As a commercial insurance broker, we have access to multiple insurance carriers who provide policy options for new and long-time cannabis industry owners. Having access to more than a single carrier is critically important in order to allow us to strike the best deal possible for you, the business owner. Our goal in representing you to multiple carriers is to create a competitive environment where the insurance companies are compelled to present the most enticing policy options available to secure you the best coverage at attractive pricing.

Our friendly, experienced, and knowledgeable staff is ready to help you not only prepare for the unexpected, but to work side-by-side with you to help your business realize the highest return possible for your insurance dollar invested.

**Give us a call today!**



**Phone Number:** 425-320-4280  
**Fax Number:** 425-212-4316  
**Email:** Cannabis@mosaicia.com

2122 164th St SW Ste 301  
Lynnwood, WA 98087



[www.MosaicIA.com](http://www.MosaicIA.com)



@MosaicInsuranceAlliance



@CannabizInsurance



@Mosaic Insurance Alliance



@AllianceMosaic

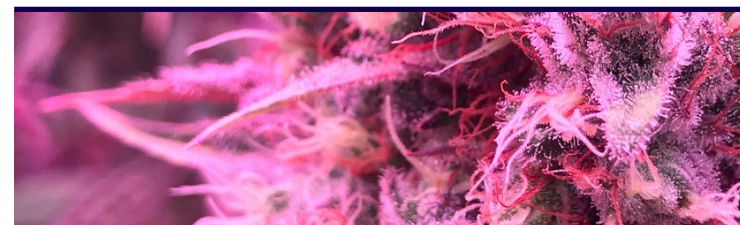


@Mosaic Insurance Alliance



**MOSAIC**  
INSURANCE ALLIANCE, LLC

*Stronger... Together*



**INSURANCE SOLUTIONS**

**for businesses within the  
Cannabis Community**





## Why Mosaic Insurance?

**Trust.** Our reputation within the cannabis marketplace speaks for itself. Our frequent appearances and invitation to speak before associations that serve the cannabis community are a direct result of our reputation as an informed, trusted advisor to this quickly evolving industry.

**Knowledge.** Our staff's understanding of standard industry practices and procedures help us navigate the complex underwriting environment. We understand the difference between BHO, CO2, and alcohol extraction methods; and—just as important—*how* to present your operations in a way that secures attractive pricing and policy protections.

**Experience.** Having placed hundreds of policies for cannabis producers, processors, dispensaries, and supporting businesses, we know how to quote, insure, and protect your business assets, as well as meet your individual state regulatory requirements.

**Market Access.** Recognized as one of the top insurance agencies serving the US cannabis industry, we have access to the leading property, liability, and inland marine carriers in the market today.



## Marijuana Dispensaries

### *MEDICAL & ADULT USE - RECREATIONAL*

- Property Coverage for Tenant Improvements
- Coverage for Cannabis Stock - Inventory
- Workman Compensation

## Marijuana Producers

### *GROWERS*

- Crop Coverage—Indoor Grows
- Property Coverage for Grow Equipment & Outbuildings Including Green Houses
- Stock Throughput Coverage - Protecting Your Product in all Phases of Production, Incoming Transit/Cargo

## Marijuana Processing

### *OPERATIONS*

- Bag & Tag Processing
- Extract Oil, Wax, Tincture, Dabs, & Shatter
- Edibles
- Dietary Supplements
- Lotions & Topicals



## Building & Property Coverage

### *MEDICAL & ADULT USE - RECREATIONAL*

- Landlord & Property Management
- Leased Equipment - Leased by You or Leased to Others
- Grow Equipment

## Professional Liability

### *ERRORS AND OMISSION COVERAGE*

- |               |                        |
|---------------|------------------------|
| • Attorneys   | • Directors & Officers |
| • Consultants | • Inspectors           |
| • CPA's       | • Property Managers    |

## CBD Processors/Retailers

- Premises and Product Liability Coverage
- Cyber Liability Coverage (Online Retailers)
- Business Property Insurance
- Supply Chain Disruption Coverage (Loss of a Contract Manufacturer)

## Hemp Producers/Processors

- Crop Coverage
- Property Coverage
- Liability Coverage